



Minipex

APEX LOCATOR

25 National Patents 8 Invention Patents



Real convenience is

Mini
slim but heavy.

Visible
Oval-shaped,
better visibility

Distinguishable

Alarm by different buzzing,
easily distinguish



Accurate & Sensitive

Clinical data matching,
The accuracy rate has been improved to

97.71%

Upgraded chip, real-time response, the sensitivity has been improved double. Innovative algorithm, multi-frequency measurement, and anti-interference.



The accuracy contrast among woodpecker,
American brand d and Japanese brand s

Method: Prepare 97 teeth of pulpitis and apical parodontitis, total 175 root canals. After finishing the initial root canal preparation, use the Apex Locators of Woodpecker, American brand D and Japanese brand S separately to measure the length of root canals, and combine the X-Ray film to test, finally compare the accuracy of the three types of Apex Locators.

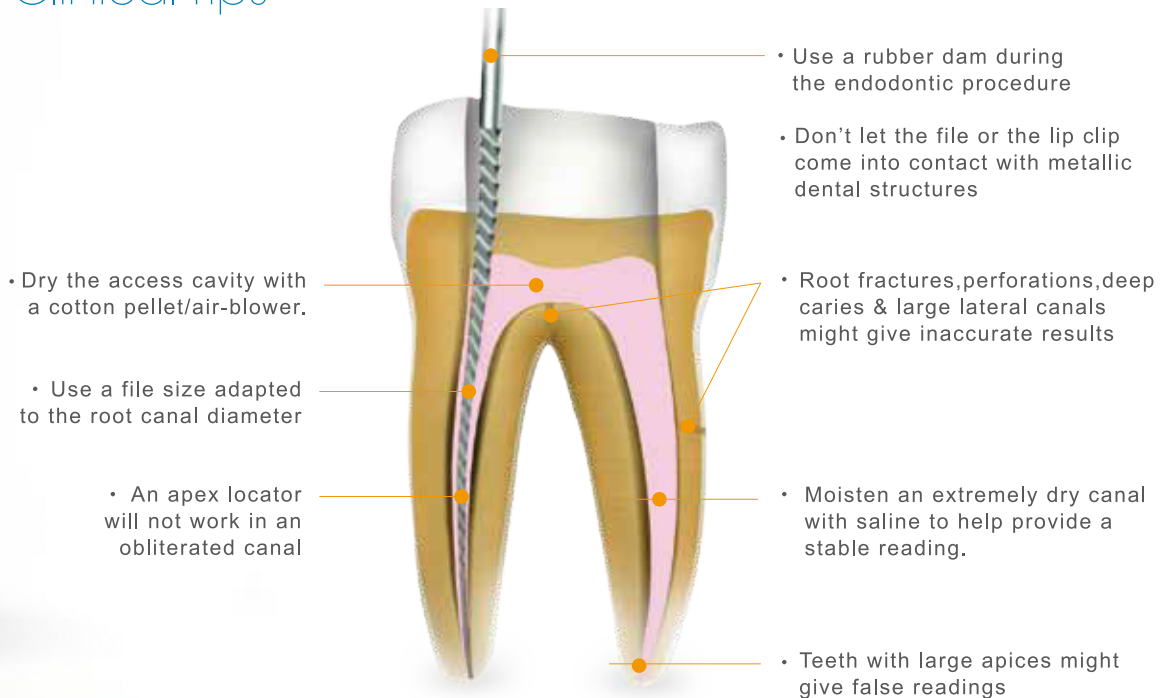
Group	QTY of tested root canal	QTY of accurate results	Accuracy Rate
Woodpecker	175	171	97.71%
American brand D	175	171	97.71%
Japanese brand S	175	171	97.71%

Cited Reference: Gu Yuan Ping

In vivo accuracy of three electronic root canal length measurement devices: Dentaport ZX, Woodpex III and ProPex II

anywhere at anytime

Clinical Tips



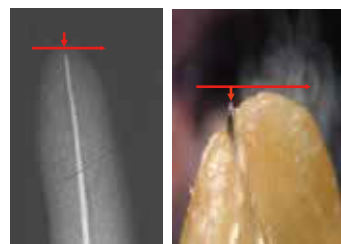
The defect of traditional measurement method

1. Disadvantage of handing method

- Based on hand feeling and patient's pain, dentists decide whether the measuring tool reaches apical foramen, with high subjectivity and low accuracy. Foreign literature suggest that providing the range of error ± 0.5 mm, accuracy of handing method is only 42%.

2. Disadvantage of X ray film

- 3D structure shooting at 2D plana, because of different angles, easily getting wrong data.
- Apical foramen can't be shown in the X ray film, for over 80% apical foramens are in the side edge instead of apex.



X ray film shows under-filling

Actually it is over-filling



The apical foramen is in the side edge, X ray shooting cause error length, The greater error, more serious over-filling



Guilin Woodpecker Medical Instrument Co., Ltd.
Information Industrial Park, Guilin National Hight-Tech
Zone, Guilin Guangxi, 541004 P. R. China

RUMAR
mayorista dental

**Importador mayorista Woodpecker / DTE
para España y Portugal**

RUMAR Cedeira S.L.

C. del Obispo Golfín, 11, Bajo A, 28430 Alpedrete, Madrid
Tlfno.: 91 849 01 04
Tlfmo. móvil / Whatsapp: +34 626 327 863

¡Siempre en Stock! Entrega en 24 horas.
Dispositivos, accesorios, repuestos y servicio postventa

Su distribuidor de confianza: