

ONECURE™

X-Star

Unlimited Curing Solution



EADY FOR ANY CLINICAL SITUATION

All-in-One Solution with 8 Working Modes

Diagnosis Mode

Emits white light for additional lighting in the posterior area, detecting cracked teeth, distinguishing between natural teeth and dentures, and comparing resin and tooth colors.

Long press the Standby button in any interface to start the white light diagnosis mode

Normal Mode



Less Heat & STD Heat

Constant light intensity: 1000-1200mW/cm²

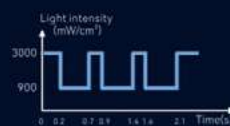
High Mode



Less Heat

The light is output in a periodic flashing manner, with a maximum light intensity of 1800-2000mW/cm².

Turbo Mode



Less Heat

The light is output in a periodic flashing manner, with a maximum light intensity of 2700-3000mW/cm².

Ortho Mode



Less Heat

The light is output in a periodic flashing manner, with a maximum light intensity of 2700-3000mW/cm².



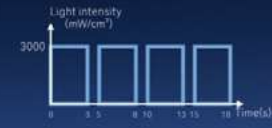
STD Heat

Constant light intensity: 1800-2000mW/cm²



STD Heat

Constant light intensity: 2700-3000mW/cm²



STD Heat

Constant light intensity: 2700-3000mW/cm²

Soft Mode



Less Heat & STD Heat

Light intensity is gradually increased from a weak level to 1200mW/cm²

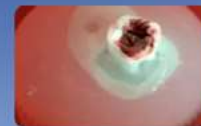
Pulse Mode



Less Heat & STD Heat

The light is output in a periodic flashing manner, with a maximum light intensity of 1000-1200mW/cm².

Check Mode



Less Heat for Gentle Care

Pulsed output mode Less Heat.

In Less Heat, while ensuring the curing depth of $\geq 4\text{mm}$ in just 10 seconds, the temperature is significantly lower compared to the constant output (STD Heat).

It has obvious advantages for vital pulp that requires low-temperature curing, or for scenarios like long-time curing and the occasions needing less heat generation from the irradiated area.

- Protect the patient's dental pulp
- Prevent burns to the oral mucosa or soft tissues
- Provide patients with better treatment experience

INNOVATION IN EVERY DETAIL



Φ12mm Lens Diameter

Provides a larger single exposure area, reducing the number of exposures needed and enhancing curing efficiency



X-Star

12mm Lens Diameter



Ordinary Curing Light

8mm Lens Diameter

13 LED Chips

1 violet, 8 blue, and 4 white chips, preventing uneven spots and dark areas.



Upgraded Light Head

Light head 10mm longer than O-Star, making it easy to reach all corners of the mouth

Aerospace-grade Aluminum Body

Built to last with enhanced impact and wear resistance.

Intuitive Control

Dual Buttons + OLED Screen
Avoid clinical errors

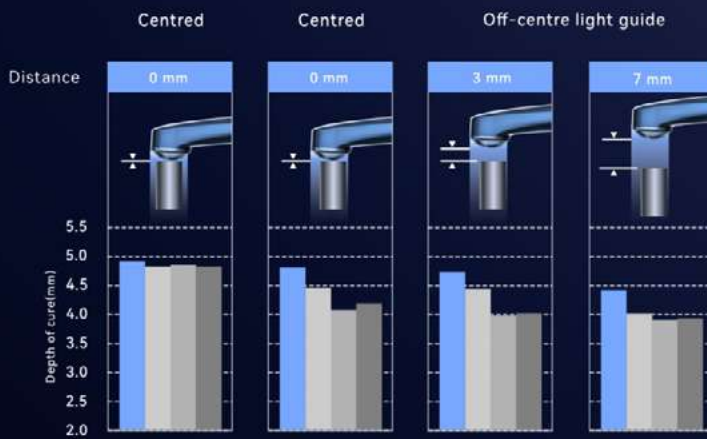


POWERFUL PENETRATION FOR EFFORTLESS CURING

At a 10mm irradiation distance, the light angle is only 8.5°, providing a more concentrated light for deeper curing depth.

With its larger lens diameter, uniform light output, and exceptional penetration capability, the X-Star ensures reliable performance even in challenging light positioning scenarios. It compensates for slight movements during the curing process, delivering a high curing depth.

Depth of cure(mm) for various positions



Samples of Kerr Neofil™ Dental composite resin materials for restorative applications, Shade A3, were cured for 20 seconds at different curing light positions.

- X-Star
- Competitor-A
- Competitor-B
- Competitor-C



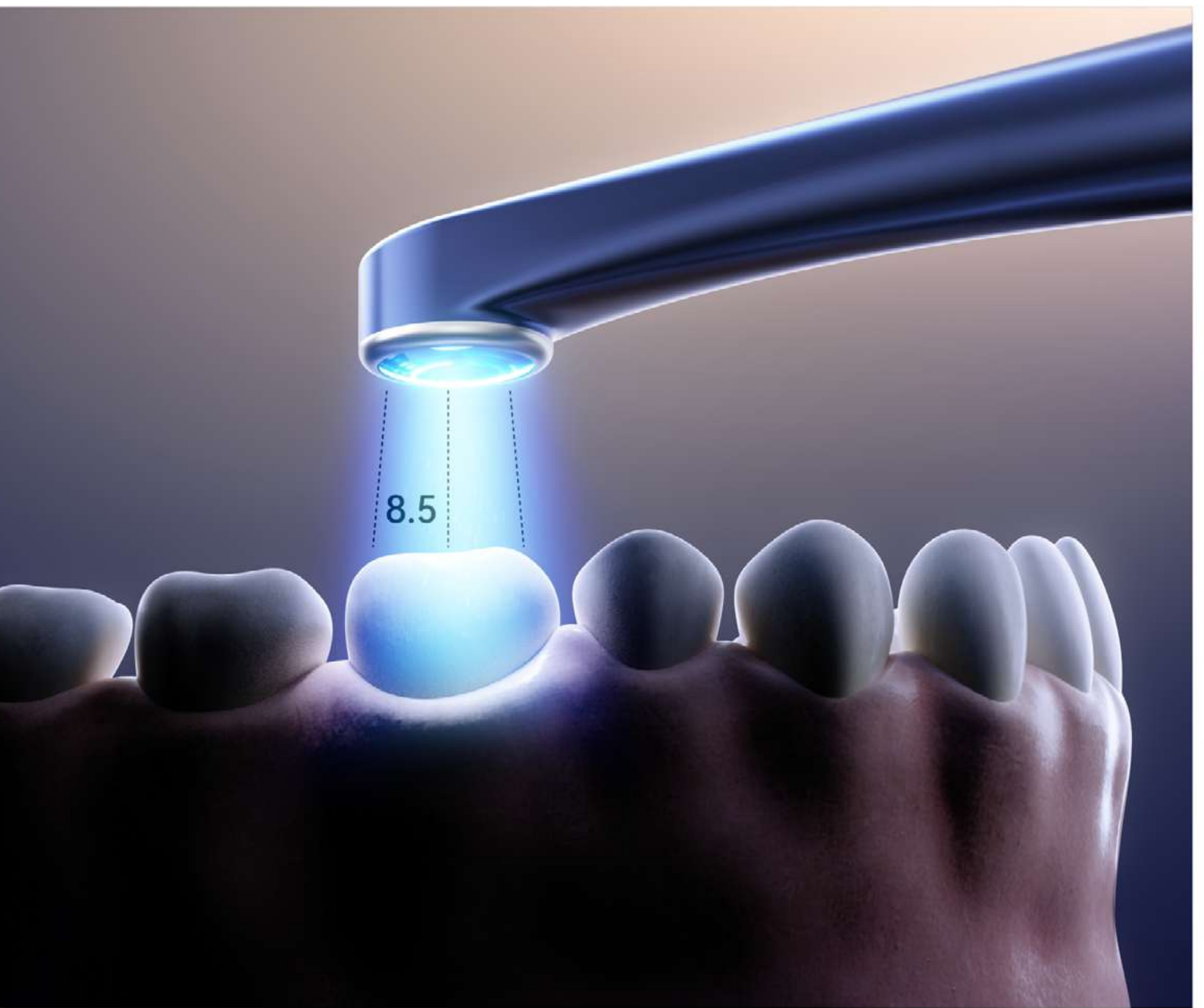
Spare Batteries

Dual replaceable batteries ensure long-lasting operation. Battery can be charged wirelessly on the base.

Wireless Charging Base With Built-in Light Meter

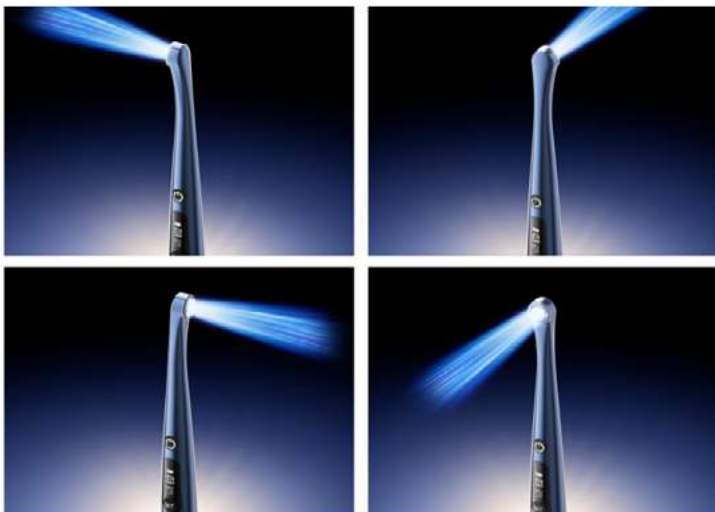
Ensure accurate light intensity for efficient resin curing.





Wireless Charging Base With Built-in Light Meter

Ensure accurate light intensity for efficient resin curing.



Point Cure Lens

Can be used for local curing, such as porcelain veneers. It's also suitable for checking tooth cracks in Diagnosis Mode.



Diffuser Lens

Under Check Mode or Diagnosis Mode, it can work for operations like caries detection or auxiliary illumination.



Slim Point Cure Lens (Optional)

Suitable for curing in narrow spaces, such as curing fiber posts or fluid resin inside cavities.



Ball Tip Point Cure Lens (Optional)

Ideal for interproximal curing, improving curing efficiency.



Deep Access Cure Lens (Optional)

Designed for curing in hard-to-reach areas, such as distal surfaces and posterior teeth.



+ Info



SPECIFICATIONS

Wavelength	380nm-515nm	Handpiece Material	Aerospace-grade Aluminum Body
Light Intensity	1000-3000mW/cm ²	Battery Capacity	2000mAh×2
Light Head	360°rotatable metal light head	Charging Base	Wireless charging base with built-in light meter, LCD screen displays light intensity value
Power	15W	Battery Life	10 seconds/cure, two batteries for a total of 1200 uses
Chip	8 blue, 1 violet and 4 white LED chips		
Lens Diameter	12mm		
Irradiation Area	113mm ²		
Handpiece Weight	108g		



Guilin Woodpecker Medical Instrument Co.,Ltd.
Information Industrial Park, Guilin National High-Tech
Zone, Guilin, Guangxi, 541004 P. R. China



Woodpecker Wholesale importer in Spain and Portugal.

RUMAR Cedeira S.L.

C. del Obispo Golfín, 11, Bajo A, 28430 Alpedrete, Madrid
Tlfno.: 91 849 01 04
Tlfno. móvil / Whatsapp: +34 626 327 863

RUMAR guarantees the after-sales service of this product through its distributors / technical service partners.

Always in stock! Delivery in 24 hours